

Series to Multiple Isolation Transformer

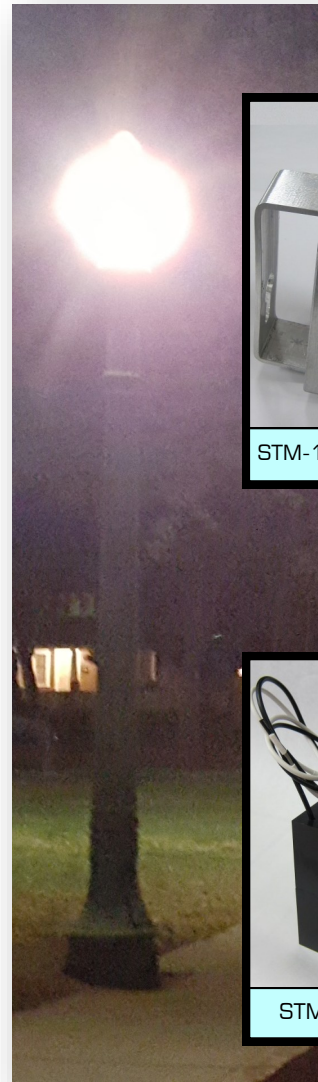
US Pat. #9,554,444
Additional patents pending

Regulator Tested



PROUDLY ASSEMBLED IN
Everett, Washington, USA

- Constant current input; primary leads insulated to 7.5kV
- 120V (60Hz) or 230V (50Hz) nominal isolated secondary
- Flexible capacity—from 40W to 400W maximum high power factor load—single transformer can handle multiple loads
- Epoxy encapsulated; dust tight and weatherproof
- Built for the long-haul—durable components and precision design offer cooler operation, longer life
- Operates most lighting technology, ranging from incandescent to the highest efficiency LED
- Allows conversion on a pole-by-pole basis
- Isolated secondary output
- Compact design for discreet use in pole base, pull box or mounted to the pole
- Allows use of photocells or line-voltage controls
- Loop loading calculations available. Several loading factor options to facilitate proper regulator loading.
- Custom units upon request
- Regulator Tested. Each STM design is verified on an actual Regulator in the lab prior to release.
- OV20 Systems transformer products feature a limited 5 year warranty. Consult factory for details.



STM-140-AL-SMA



STM-140-WL

OV20 Systems Series to multiple Isolation Transformer will allow you to convert your series lighting systems to line voltage on a pole-by-pole basis. Costly conversions can be postponed indefinitely. No longer are you beholden to your remaining stock of specialized incandescent lamps, nor reliant upon a single ballast manufacturer. With OV20 Systems STM Transformers, you can upgrade to the latest long-life, energy efficient technology. Contact us today to find out how to extend the life of your system.



Series to Multiple Isolation Transformer

US Pat. #9,554,444
Additional patents pending

Regulator Tested



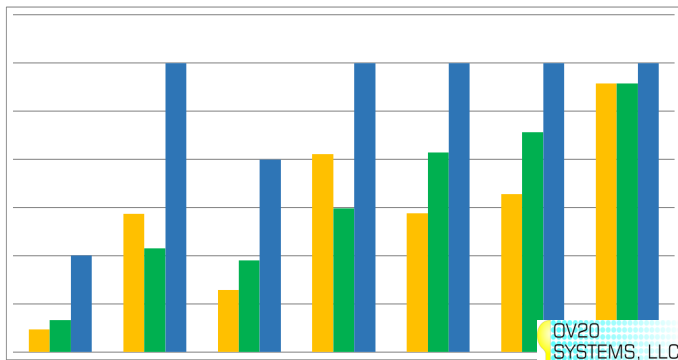
PROUDLY ASSEMBLED IN
Everett, Washington, USA

Satisfying customer needs since 2012

Circuit Loading Calculation

It's imperative that your circuits be properly loaded to avoid overload and improve the efficiency of your regulator. Loading factors are provided as a guideline. Simply add up the loading factors of all the devices on your circuit and compare with the regulator size in kW. Optimally, a regulator should be loaded close to 100%.

Loading factors are calculated from reactive power and do not reflect the actual energy consumption. Contact us for more detail. We can create a custom loading plan to help you determine the correct mix of transformers to optimally load your regulator.



System Protection: ACSD



We worked in close concert with our customers to produce the new **ACSD—Automated Circuit Shutdown Device**. It monitors the series circuit for

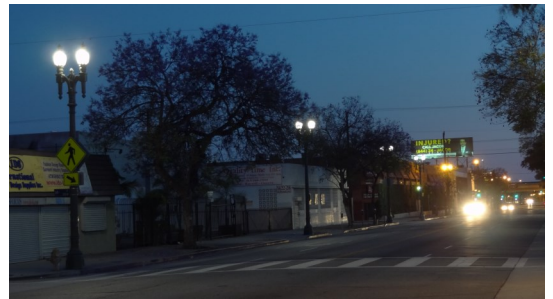
Overcurrent, Undercurrent or an Arc. If a disturbance is greater than the threshold set by the ACSD, it will disconnect power from the series circuit and illuminate a trouble indicator light on the unit, locking out the circuit.

The ACSD can help preserve your systems by reducing damage from arcing lines, and it improves safety by disconnecting power in the event of an open circuit or arc. See our website for more detail on the benefits of the ACSD and the ACSD Reader.



Upgrading Makes Sense Today.

Ready to deploy LED technology? You can include your series circuits! OV20 Systems transformers with STM technology are designed to make upgrades quick and easy. Just add an STM transformer, then connect your new light source to the line voltage output. It's an easy and cost-effective way to upgrade series circuits to LED.



Need A Custom Solution for your situation? Drop us a line.



OV20 Systems, LLC
PO BOX 281
Monroe, WA 98272
(360) 863-1999

<http://www.ov20systems.com>

Series to Multiple Isolation Transformer

US Pat. #9,554,444
Additional patents pending

Regulator Tested



PROUDLY ASSEMBLED IN
Everett, Washington, USA

Ordering Example: **STM-6.6A-120M-110W-WLS**

Product Code	Primary Amps	Secondary Volts (load capacity nominal +/- 10%)	Maximum Load*/ System Loading Factor	Enclosure Types Available (See pg. 4)
6.6A primary 60Hz 120V nominal (+/- 10%)				
(STM) Series To Multiple transformer, 60Hz	(6.6A) 6.6 Amp	(120G) up to 400W HPF	(400W) LED 400W Max 1.00kW Loading Factor	(WLL) (ALL)
		(120X) up to 300W HPF (in development)	(300W) LED 300W Max	(WLL) (ALL)
		(120H) up to 200W HPF	(200W) LED 200W Max/ 0.47kW Loading Factor	(WL) (AL)
		(120L) up to 175W HPF	(175W) LED 175W Max/ 0.41kW Loading Factor	(WL) (AL)
		(120M) up to 110W HPF	(110W) LED 110 Max/ 0.3kW Loading Factor	(WLS) (AL)
		(120U) up to 75W HPF	(75W) LED 75W Max/ 0.26kW Loading Factor	(WLS) (AL)
		(120C) up to 60W HPF	(60W) LED 60W Max/ 0.21kW Loading Factor	(WLS) (AL)
		(120P) up to 40W HPF	(40W) LED 40W Max/ 0.12kW Loading Factor	(WLS) (AL)
		(120E) 150W HPS HPF CWA ballast	(150HPS) runs 120v 150W HPS 0.47kW 0.47kW Loading Factor	(WLS) (AL)
		(120B) 100W HPS HPF CWA ballast	(100HPS) runs 120v 150W HPS ballast 0.47kW Loading Factor	(WLS) (AL)

See next page for 20A product and transformer options

Need 50Hz? 7.5A or 9.6A? Contact us for details. We will design a solution for you.

Series to Multiple Isolation Transformer

US Pat. #9,554,444
Additional patents pending

Regulator Tested



PROUDLY ASSEMBLED IN
Everett, Washington, USA

Ordering Example: **STM-20A-120H-200W-WL**

Product Code	Primary Amps	Secondary Volts (load capacity nominal +/- 10%)	Maximum Load*/ System Loading Factor	Enclosure Types Available
20A primary 60Hz 120V nominal (+/- 10%)				
(STM) Series To Multiple transformer, (60Hz)	(20A) 20 Amp	(120H) up to 200W HPF	(200W) LED 200W Max 0.48kW Loading Factor	(WL) (AL)

Options (add as suffix to part number)

(PL_)

Primary Leads. Standard is 2 ft. (specify custom length in feet)

(SL_)

Secondary Leads. Standard is 2 ft. (specify custom length in feet)

(SO)

Secondary output cable 10/3 SO Cable (includes GND)

(HV_)

High voltage primary wire for 6.6A regulators over 40kW—Specify regulator kW size

(GND)

Ground lead, bonded to transformer core. Automatically included when SO option is selected.

(CGND)

AL and ALL enclosure only. Case ground for aluminum case. Not grounded to core. (If SO option is selected, there will be a core ground located in the SO cable in addition to the separate case ground wire)

(SMA)

Pole/Crossarm Mounting Adaptor. Requires AL or ALL Enclosure, pole mounting hardware not included

Need 50Hz? 7.5A or 9.6A? Contact us for details. We will design a solution for you.

- Innovative design; US Patent 9,554,444; other patents pending
- 24" Primary and secondary leads standard
- Primary: #8 stranded copper, 7.5kV insulated, Weatherproof, oil & water resistant
- Secondary: #10 stranded copper 600V insulated, Weatherproof, oil & water resistant
- +/-10% of rated voltage for HPF secondary loads
- Optional side mounting adaptor for metal enclosure, for mounting to pole or crossarm

Enclosure	A	B	C	Max Weight
WLS	3 3/4"	4"	2 3/4"	5 lbs
WL	5 1/2"	4"	2 3/4"	8 lbs
WLL	7"	6"	5"	18 lbs
AL	5 3/4"	4 1/8"	3"	10 lbs
ALL	7"	5"	4 1/4"	15 lbs